

EYE6N0-S678 ONX

AI Video Smart City Camera

YUAN
Visualize Intelligent Planet

Features

- 4K60 HDR/WDR AI camera accelerated by NVIDIA® Jetson Orin™ NX Super
- Up to 157 TOPS AI with multiple models including Generative AI
- Hardware ISP design without CPU/GPU Loading
- Lens support auto-focus and auto-IRIS
- DMA PCIe design high-bandwidth capture, providing RGB444 image quality



Camera Specifications

Sensor Specifications			
Max Resolution	3840x2160 (8M)	Frame Rate	60
Shutter	Rolling Shutter	Sensor Size	1/1.8"
Pixel Size	2.0 x 2.0 μm	Sensor Model	CMOS
Color/Mono	Color	Lens	Build in Focal lens
Lens Specifications			
Focal Length	10.2mm (W) ~ 29.5mm (T)	Aperture	F1.6 (W) ~ F1.7 (T)
FOV(D)	52~16.6 degree	Mount	Build in
IRIS Control	DC Auto IRIS	IR Cut Filter	Can be switched on or off
Video Tuning Specifications			
Shutter Speed	1/30(1/25) second – 1/76800 second	Auto Gain Control	60dB
HDR	Yes (2 Frames)	WDR	Yes
2D/3DNR	Yes	Low Light Gain Technology	Yes
Video Adjustment	Brightness, contrast, hue, saturation, sharpness, horizontal flip, vertical flip, rotation, overexposure suppression	EV Value	EV - 2 ~ EV + 2

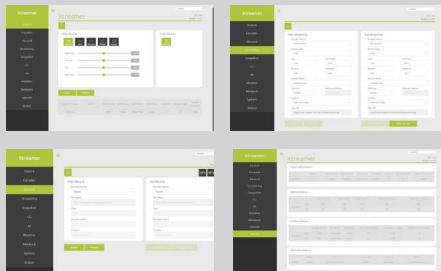
System Specifications

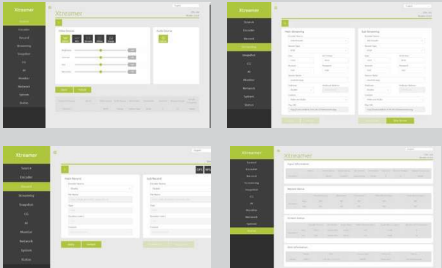
System		
CPU	NVIDIA Jetson Orin™ NX 8GB Super 6-Core Arm® Cortex®-A78AE v8.2 64-Bit CPU 1.5MB L2 + 4MB L3	NVIDIA Jetson Orin™ NX 16GB Super 8-Core Arm® Cortex®-A78AE v8.2 64-Bit CPU 2MB L2 + 4MB L3
GPU	1024-Core NVIDIA Ampere Architecture GPU with 32 Tensor Cores	
AI Performance	NVIDIA Jetson Orin™ NX 8GB Super 117 TOPS	NVIDIA Jetson Orin™ NX 16GB Super 157 TOPS
System Memory	NVIDIA Jetson Orin™ NX 8GB Super 8GB LPDDR5	NVIDIA Jetson Orin™ NX 16GB Super 16GB LPDDR5
Interface		
Storage	Supports External NVMe	
Display Interface	1xHDMI2.0	
Ethernet	1xRJ45 for 10/100/1000Mbps Ethernet DHCP Client	
Wireless	4G/5G/Wi-Fi 6	
USB	1xUSB3.2 Gen2 (Type-C)	

Key Points

Wireless Network	
Wi-Fi Support	Wi-Fi 802.11 a/b/g/n/ac/ax

SDK / Software

Video Feature	
Video Encode	AV1 (UHP) 1×4K60
	H.265 (UHP) 1×4K60
	H.264 (UHP) 1×4K60
SDK	
QCAP	Capture High Performance Renderer Image Snapshot
	Record Encrypt / Sync / Clone / Recording Time-Shifting / Rewind / Pre-Event / Recording Animation Transition Effect Video Cropping, Scaling and Alpha Blending Engine
	Stream RTSP, RTMP, HLS, SRT, TS, WebRTC. NDI-HX (*), Full NDI (*), Dante AV-H (*) Animation Transition Effect Video Cropping, Scaling and Alpha Blending Engine *Separate License Required
QDEEP	AI SDK Integrated Multiple Algorithms and Deep-Learning Models in Various Fields of Applications Face Recognition Objects Detection Objects Segment Optical Character Recognition License Plate Recognition Customizable Video AI Functions Upon Request
Software (Optional)	
Xtreamer	Web Based User Interface
	Encode / Decode AV1, H.26X
	Color Format Adjust 444 / 422 / 420, 10Bit / 8Bit Select
	Record MP4, TS
	Stream / Network RTSP, RTMP, HLS, SRT, TS, WebRTC. NDI-HX (*), Full NDI (*), Dante AV-H (*) *Separate License Required
	

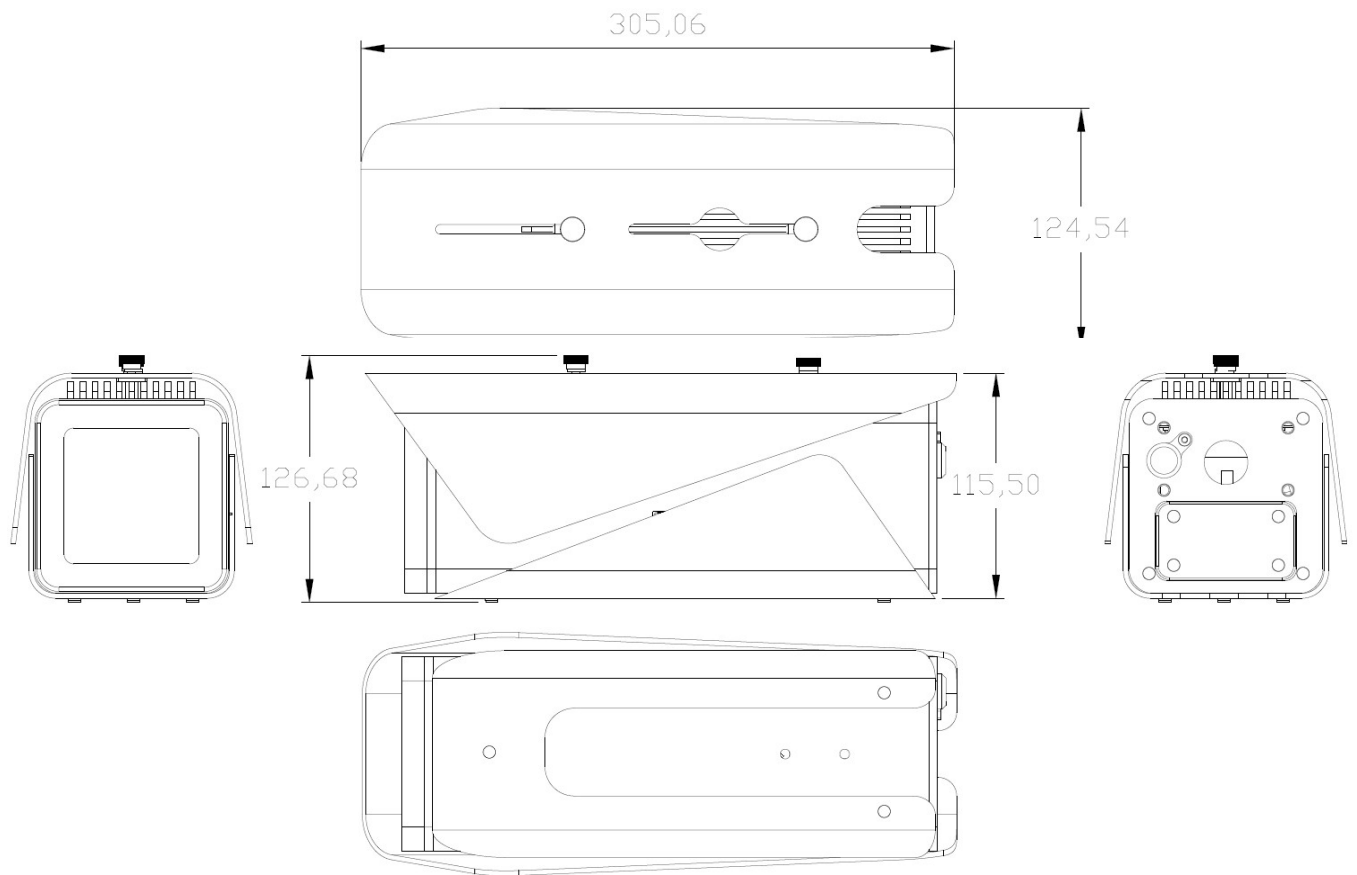


Environment

Development Environment	
JetPack	6.2 or Higher
System Spec	
Power Supply	DC Input : 12~24V
Power Consumption	60W
Operating Temperature	-20~50 ` C

Mechanical

- Dimension of Case:
124.54mm(W)x115.50mm(H)x305.06mm(D)
- Weight: 3.1kg



* All registered trademarks are the property of their owners. The photo is for reference only.

* Technology License Patent Royalty. Supplier (YUAN Technology Ltd.) as an OEM vendor is not responsible for any royalties applied to the Models and collected by any patent or trade mark holders or his exclusive, non-exclusive.

Licensees or representatives such as MPEGLA, Dolby, Thomson, Sisvel, H.264, MPEG4 and any other natural or legal person. All concerning royalties of patents and trade marks will be paid or negotiated with the above mentioned owner by you. In case of any patent or trademark infringement you are responsible for all necessary processes and costs. You accept and acknowledge that all prices of Models offered by supplier are exclusive of any royalties, charges or license fees for any patents in any countries or areas.