



AI-Powered Precision for ProAV and Live Broadcasts

Discover the AIR6N0-C NX TRX

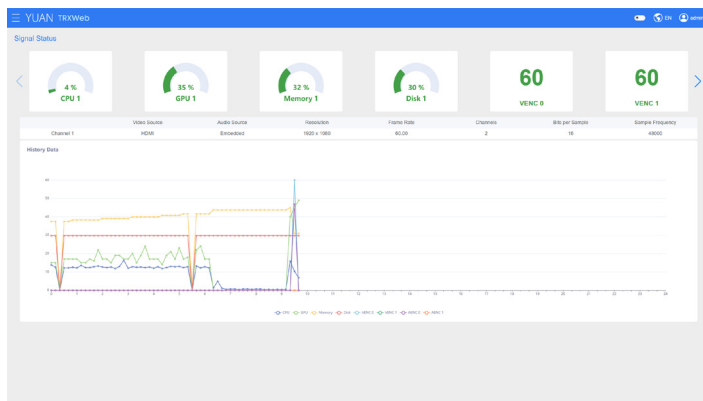


NVIDIA® Jetson Orin™ NX Super

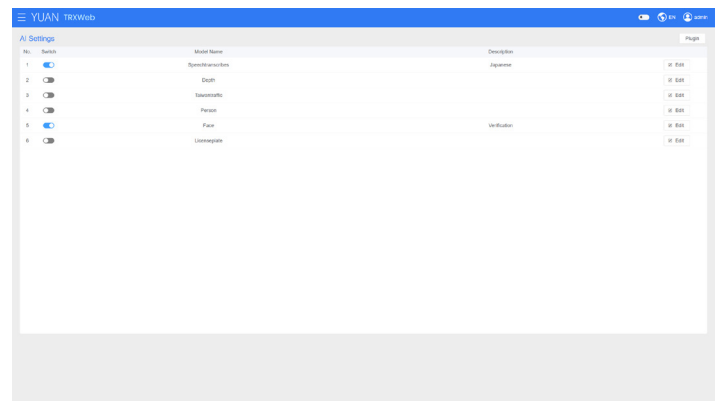
The AIR6N0-C NX TRX, powered by NVIDIA® Jetson Orin™ NX Super, is purpose-built for AI-driven Broadcasting and ProAV applications. With a hardware design featuring Telly and I/O boards, low-latency streaming, and real-time processing, it excels in live broadcasting and advanced content creation. The included control software enhances monitoring and management, ensuring efficient, precise, and AI-optimized workflows.

Features

- Powered by NVIDIA® Jetson Orin™ NX Super
- 1U Height, 4K60 Transceiver
- Various I/O Daughter Board



Status



AI Settings

The OSD Settings page displays a table of OSD items. The table has columns for No., Alias, Type, Description, Position, Size, Color, Behavior, and Hot Key. The items listed are: 1. OSD, 2. OSD, 3. OSD, 4. OSD, 5. OSD, 6. OSD, 7. OSD, 8. OSD, 9. OSD, and 10. OSD.

OSD Settings

The Streaming Setting page displays a table of streaming settings. The table has columns for No., Stream, Protocol, Destination, Video Encoder, Audio Encoder, and CPU / GPU. The settings listed are: 1. Main, 2. Main, 3. Sub, 4. Sub, 5. Main, and 6. Sub.

Streaming Setting

AIR6N0-C NX TRX

CPU	NVIDIA® Jetson Orin™ NX 8GB Super 6-Core Arm® Cortex® -A78AE v8.2 64-Bit CPU 1.5MB L2 + 4MB L3	NVIDIA® Jetson Orin™ NX 16GB Super 6-Core Arm® Cortex® -A78AE v8.2 64-Bit CPU 6MB L2 + 4MB L3
GPU	1024-Core NVIDIA Ampere Architecture GPU with 32 Tensor Cores	
AI Performance	NVIDIA® Jetson Orin™ NX 8GB Super 117 TOPS	NVIDIA® Jetson Orin™ NX 16GB Super 157 TOPS
System Memory	NVIDIA® Jetson Orin™ NX 8GB Super 8GB LPDDR5	NVIDIA® Jetson Orin™ NX 16GB Super 16GB LPDDR4x

System Memory

Storage Supports External NVMe

Display Interface 1×HDMI2.0
1×12G-SDI

Ethernet 1×RJ45 for 10/100/1000Mbps Ethernet
DHCP Client

Expansion Slot M.2
Jetson Orin™ NX
1×M.2 2280 M Key PCIe Gen4×1 Slot
1×M.2 2280 M Key PCIe Gen4×2 Slot

USB 1×USB3.2
2×USB2.0

Audio 1×3.5mm Line / MIC In
1×3.5mm Line Out / Headphone

Peripheral Communication 18 Pin Header
4×GPIO
3×I2C

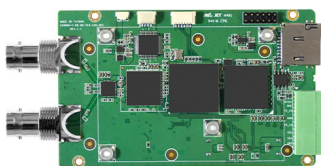
2×4 Pin Header
2×Tally
2×LED

8 Pin Phoenix Connector
1×RS232
1×RS485
1×GPIO

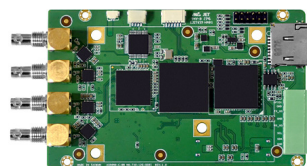
Misc. Features Firmware Upgradable

Broad Product Line

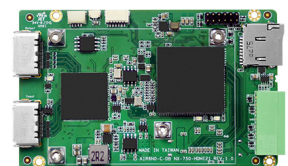
web: www.yuan.com.tw
e-mail: sales@yuan.com.tw



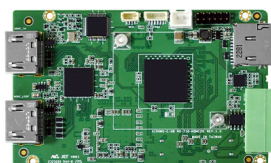
AIR6N0-C-MB NX 12G-SDI
NVIDIA Jetson Orin™ NX Super
1×12G-SDI
1×4K60



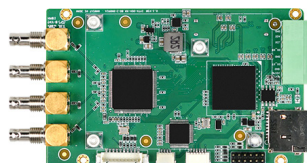
AIR6N0-C-MB NX 12G-SDI QL
NVIDIA Jetson Orin™ NX Super
1×12G-SDI / 2×6G-SDI / 4×3G-SDI
1×4K60 / 2×4K30 / 4×HD60



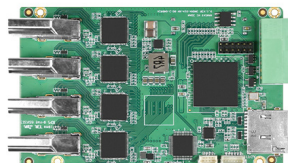
AIR6N0-C-MB NX HDMI2.1
NVIDIA Jetson Orin™ NX Super
1×HDMI2.1
1×4K60 / 444 / 10Bit



AIR6N0-C-MB NX HDMI2.0
NVIDIA Jetson Orin™ NX Super
1×HDMI2.0
1×4K60



AIR6N0-C-MB NX 4xTVI
NVIDIA Jetson Orin™ NX Super
4×TVI
4×1080p30



AIR6N0-C-MB NX 4xHDMI
NVIDIA Jetson Orin™ NX Super
4×HDMI
4×1080p60