

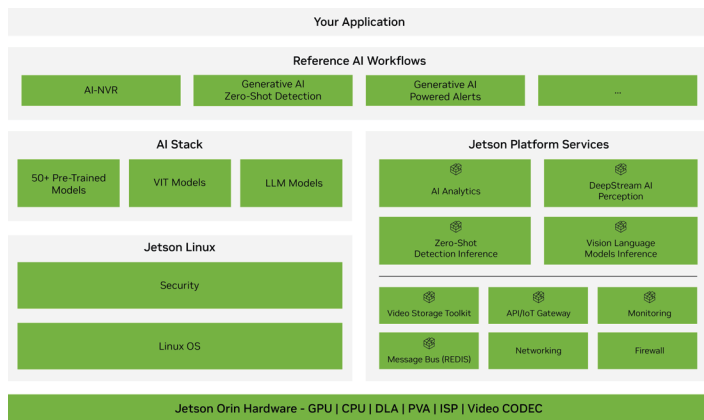
Pandora

Discover Generative AI at the Edge

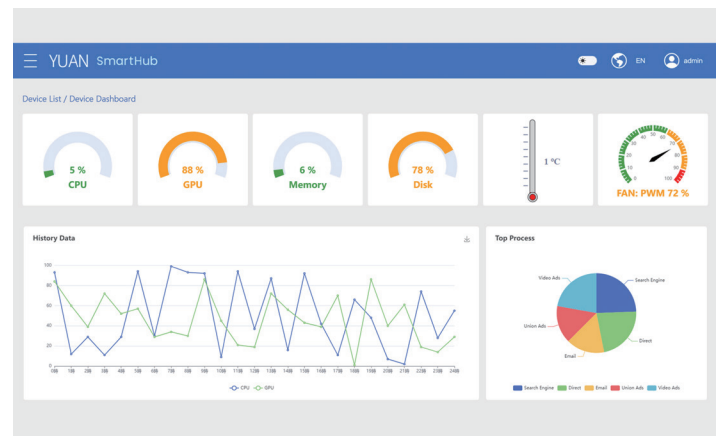
Pandora is a breakthrough in the design of traditional AI platforms. Not only does it have powerful features, but it is also a product that is suitable for general consumers and meets the expectations of professionals. What's more, Pandora opens up a lot of room for creativity, allowing users to customize advanced functions and DIY cases. Users can freely configure the product to suit different occasions.

Feature

- Scalable solution based on NVIDIA® Jetson platform.
- Optimized thermal design for intensive computing demand.
- Integrated with NVIDIA® JetPack SDK for optimized efficiency.
- Empowers users to unlock creative potential in AI development.



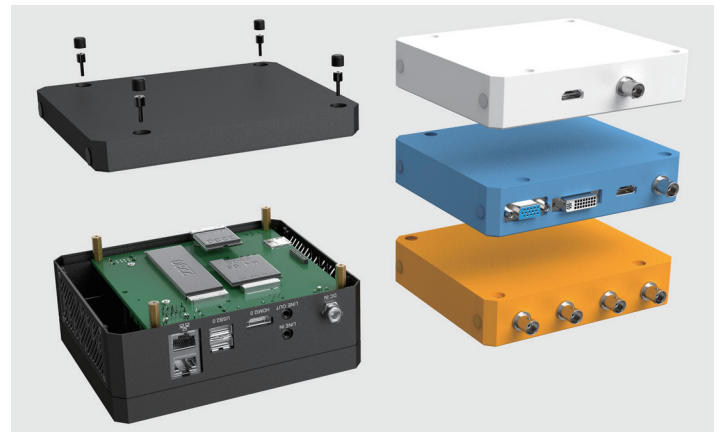
Explore the Rich Software Services by NVIDIA



Effortless Device Control, Simplified



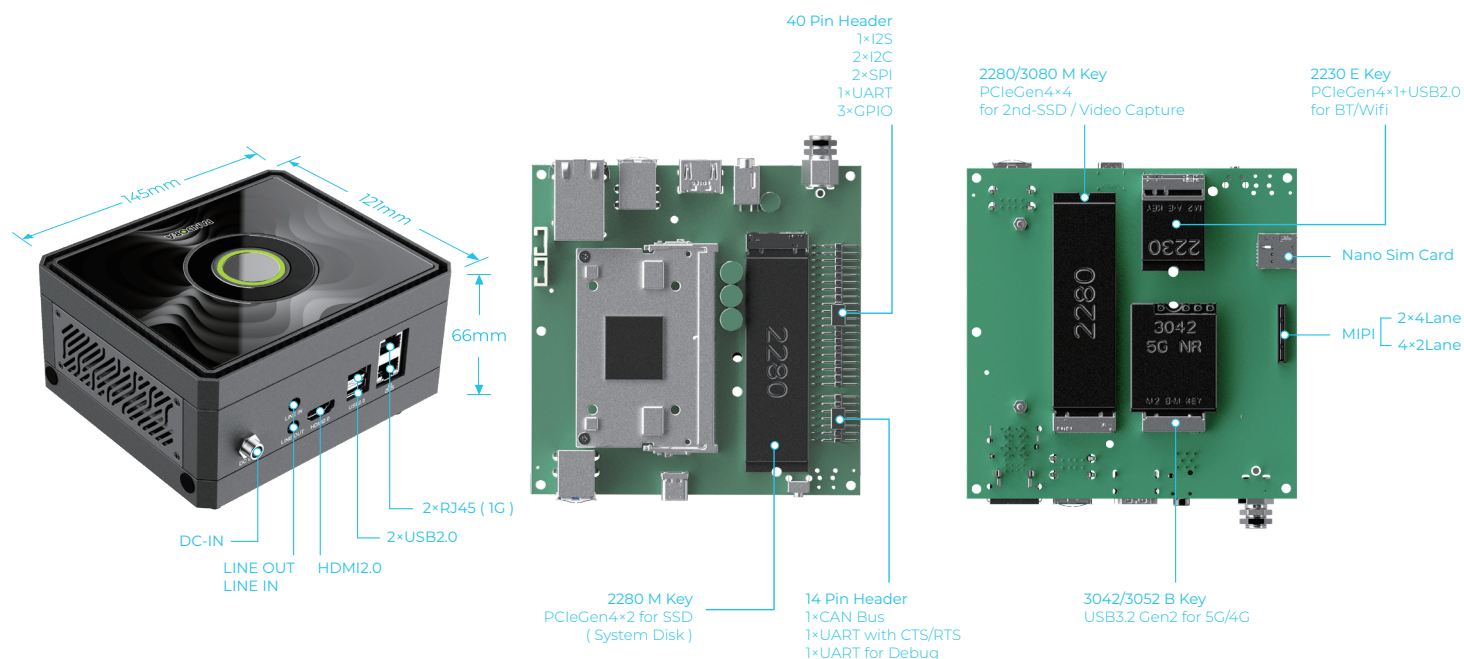
Versatile Solutions for Smart Retail & Creative Developers



DIY-Friendly for Endless Possibilities

Pandora

Discover Generative AI at the Edge



Pandora

NVIDIA® Platform	NVIDIA® Jetson Orin™ NX 16GB / 8GB Super		NVIDIA® Jetson Orin™ Nano 8GB / 4GB Super	
AI Performance	157 / 117 TOPS		67 / 34 TOPS	
Display	1×HDMI2.0			
GPU	1024-core NVIDIA Ampere Architecture GPU with 32 Tensor Cores			
CPU	8-core Arm® Cortex®-A78AE (Orin NX 16GB Super)	6-core Arm® Cortex®-A78AE (Orin NX 8GB Super)	6-core Arm® Cortex®-A78AE (Orin Nano 8GB / 4GB Super)	
Memory	16GB 128-bit LPDDR5 (Orin NX 16GB Super)	8GB 128-bit LPDDR5 (Orin NX 8GB Super)	8GB 128-bit LPDDR5 (Orin Nano 8GB Super)	4GB 64-bit LPDDR5 (Orin Nano 4GB Super)
Storage	Supports External NVMe			
Expansion				
M.2	1×M.2 2280 M Key PCIe Gen4×2 Slot (with Pre-Installed 128GB SSD). 1×M.2 2280/3080 M Key PCIe Gen4×4 Slot, Support SSD or Video Capture Cards. 1×M.2 2230 E Key PCIe Gen4×1+USB2.0 Slot, Support WiFi Module. 1×M.2 3042/3052 B Key USB3.2 Gen1 Slot, Support 5G/4G Wireless Module		1×M.2 2280 M Key PCIe Gen3×2 Slot (with Pre-Installed 128GB SSD). 1×M.2 2280/3080 M Key PCIe Gen3×4 Slot, Support SSD or Video Capture Cards. 1×M.2 2230 E Key PCIe Gen3×1+USB2.0 Slot, Support WiFi Module. 1×M.2 3042/3052 B Key USB3.2 Gen1 Slot, Support 5G/4G Wireless Module.	
Expansion Connector				
USB	2×USB3.2 Gen2 (Type-A) 1×USB3.2 Gen2 (Type-C) (OTG) 2×USB2.0 (Type-A)			
Ethernet	2×RJ45 for 10/100/1000Mbps Ethernet DHCP Client			