

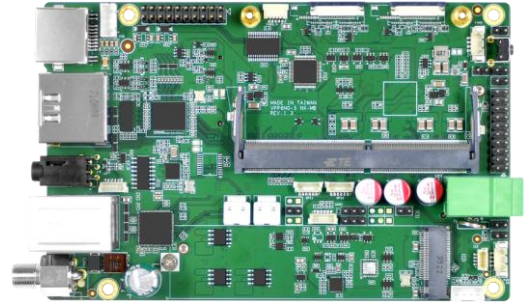
VPP6N0-S-MB NX

Compact Edge AI Platform

YUAN
Visualize Intelligent Planet

Features

- Powered by NVIDIA® Jetson Orin™ NX Super up to 157 TOPS
- 3xM.2 M Key, Gen 4x4 / Gen 4x2 / Gen 4x1
- 4xUSB3.2 Gen2
- RS232 / RS485 / I2C



Specifications

System		
CPU	NVIDIA Jetson Orin™ NX 8GB Super 6-Core Arm® Cortex®-A78AE v8.2 64-Bit CPU 1.5MB L2 + 4MB L3	NVIDIA Jetson Orin™ NX 16GB Super 8-Core Arm® Cortex®-A78AE v8.2 64-Bit CPU 2MB L2 + 4MB L3
GPU	1024-Core NVIDIA Ampere Architecture GPU with 32 Tensor Cores	
AU Performance	NVIDIA Jetson Orin™ NX 8GB 117 TOPS	NVIDIA Jetson Orin™ NX 16GB 157 TOPS
System Memory	NVIDIA Jetson Orin™ NX 8GB 8GB LPDDR5	NVIDIA Jetson Orin™ NX 16GB 16GB LPDDR5
Interface		
Storage	Supports External NVMe	
Display Interface	2xHDMI2.0	
Ethernet	1xRJ45 for 10/100/1000Mbps Ethernet DHCP Client	
Expansion Slot	M.2 1xM.2 2280/3080 M Key PCIe Gen4x4 Slot 1xM.2 2280 M Key PCIe Gen4x2 Slot 1xM.2 2280 M Key PCIe Gen4x1 Slot	
USB	4xUSB3.2 Gen2 (Type-A) 2xUSB3.2 Gen1 (Pin Header)	
MIPI	2x4MIPI CSI-2 Lanes (D-PHY 2.1, Support MIPI Camera, Capture Card)	
Audio	1xLine In (3.5mm or Pin Header) 1xLine Out (3.5mm or Pin Header)	
Peripheral Communication	1xRS232 (Phoenix Connector or Pin Header) 1xRS485 (Phoenix Connector or Pin Header) 4xGPIO (Pin Header) 3xI2C (Pin Header)	
Misc. Features	Firmware Upgradable AutoPower (Pin Header)	

Key Points

5G-DB (Optional)

Supports 5G / 4G / 3G Module
5G: Sub-6, SA, Non-SA
4G: LTE Cat20, LTE FDD, LTE TDD
3G: HSPA+



PSE-DB (Optional)

IP Camera
4xRJ45 for 10 / 100 / 1000Mbps Ethernet
(with IEEE802.3af and IEEE802.3at Compliant)
PSE Power Supply
4x15W (IEEE802.3af)
4x30W (IEEE802.3at)



* All registered trademarks are the property of their owners. The photo is for reference only.

* Technology License Patent Royalty. Supplier (YUAN Technology Ltd.) as an OEM vendor is not responsible for any royalties applied to the Models and collected by any patent or trade mark holders or his exclusive, non-exclusive.

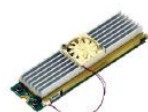
Licensees or representatives such as MPEGLA, Dolby, Thomson, Sisvel, H.264, MPEG4 and any other natural or legal person. All concerning royalties of patents and trade marks will be paid or negotiated with the above mentioned owner by you. In case of any patent or trademark infringement you are responsible for all necessary processes and costs. You accept and acknowledge that all prices of Models offered by supplier are exclusive of any royalties, charges or license fees for any patents in any countries or areas.

Add-On Cards / SDK / Software

Video Feature				
Capture Card (Optional)	M.2 Model	Interface	Max. Resolution	Capture / Preview 4:2:2 10Bit P210 4:2:0 10Bit P010 4:4:4 8Bit YV24 4:4:4 8Bit RGB32 / 24 4:2:2 8Bit YUY2 4:2:0 8Bit YV12, NV12
	SC750N1 M2 HDMI2.1	1×HDMI2.1	4096×2160p@60/50fps (4:4:4 / 10Bit)	
	SC710N1 M2 HDMI2.0	1×HDMI2.0	4096×2160p@60/50fps	
	SC710N1 M2 12G-SDI	1×12G-SDI, 1×Quad-Link 3G-SDI	4096×2160p@60/50fps	
	SC400N4 M2 TVI / AHD	4×TVI / AHD	1920×1080p@30/25fps	
	SC400N4 M2 HDMI	4×HDMI	1920×1080p@60/50fps	
	SC400N4 M2 SDI	4×3G-SDI	1920×1080p@60/50fps	
	SC400N1 M2 HDV	1×DVI-I, 1×YPbPr, 1×VGA	1920×1080p@60/50fps	
Video Encode	AV1 (UHP) : 1×4K60 3×4K30 6×1080p60 12×1080p30 H.265 (UHP) : 1×4K60 3×4K30 6×1080p60 12×1080p30 H.264 (UHP) : 1×4K60 2×4K30 5×1080p60 11×1080p30			
Video Decode	AV1 (Main Profile) : 1×8K30 2×4K60 4×4K30 9×1080p60 20×1080p30 H.265 (Main, Main10) : 1×8K30 2×4K60 4×4K30 9×1080p60 18×1080p30 H.264 (Baseline, Main, High) : 1×4K60 2×4K30 5×1080p60 11×1080p30 VP9 (Profile 0, Profile 2) : 1×4K60 3×4K30 7×1080p60 15×1080p30			
SDK				
QCAP	Capture High Performance Renderer Image Snapshot Deinterlace, Alpha Blending Engine Auto Signal Detection 2D/3D Video, Audio and VANC Streams Capture			
	Record Encrypt / Sync / Clone / Recording Time-Shifting / Rewind / Pre-Event / Recording Multi-Streams (3D) Recording Animation Transition Effect Video Cropping, Scaling and Alpha Blending Engine			
	Stream 2D/3D Universal Stream Client 2D/3D Multi-Streams Stream Server RTSP, RTMP, HLS, SRT, TS, WebRTC. NDI-HX (*), Full NDI (*), Dante AV-H (*) Animation Transition Effect Video Cropping, Scaling and Alpha Blending Engine *Separate License Required			
QDEEP	AI SDK Integrated Multiple Algorithms and Deep-Learning Models in Various Fields of Applications Face Recognition Objects Detection Objects Segment Optical Character Recognition License Plate Recognition Customizable Video AI Functions Upon Request			



SC710N1 M2 HDMI2.0



SC710N1 M2 12G-SDI



SC400N4 M2 TVI/AHD



SC400N4 M2 HDMI



SC400N4 M2 SDI


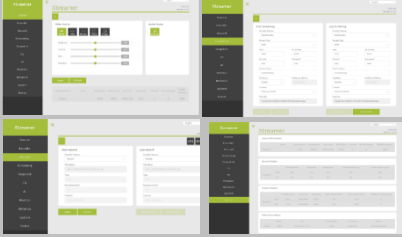


SC400N1 M2 HDV

* All registered trademarks are the property of their owners. The photo is for reference only.

* Technology License Patent Royalty. Supplier (YUAN Technology Ltd.) as an OEM vendor is not responsible for any royalties applied to the Models and collected by any patent or trade mark holders or his exclusive, non-exclusive.

Licensees or representatives such as MPEGLA, Dolby, Thomson, Sixel, H.264, MPEG4 and any other natural or legal person. All concerning royalties of patents and trade marks will be paid or negotiated with the above mentioned owner by you. In case of any patent or trademark infringement you are responsible for all necessary processes and costs. You accept and acknowledge that all prices of Models offered by supplier are exclusive of any royalties, charges or license fees for any patents in any countries or areas.

Software (Optional)		
Stream Catcher Pro	Capture Auto Signal Detection Deinterlace, OSD, Color Adjustment Image Snapshot Animation Transform Effect for PGM	
	Record AV1, H.26X MP4, TS Multi-Stream Recording Schedule Recording	
	Stream Multi-Streams Stream Server RTSP, RTMP, HLS, SRT, TS, WebRTC., Full NDI (*), NDI-HX (*), Dante AV-H (*) *Separate License Required	
Xtreamer	Web Based User Interface	
	Encode / Decode AV1, H.26X	
	Color Format Adjust 444 / 422 / 420, 10Bit / 8Bit Select	
	Record MP4, TS	
	Stream / Network RTSP, RTMP, HLS, SRT, TS, WebRTC. NDI-HX (*), Full NDI (*), Dante AV-H (*) *Separate License Required	

Environment

Development Environment	
JetPack	6.2 or Higher
Environment	
Power Supply	DC input : 12~36V
Power Consumption	TBA
Operating Temperature	Standard Version: 0~60 ° C with Airflow
Storage Temperature	-20~80 ° C

Mechanical

- Dimension of main Case: 140mm×90mm
- Weight: TBA

* All registered trademarks are the property of their owners. The photo is for reference only.

* Technology License Patent Royalty. Supplier (YUAN Technology Ltd.) as an OEM vendor is not responsible for any royalties applied to the Models and collected by any patent or trade mark holders or his exclusive, non-exclusive.

Licensees or representatives such as MPEGLA, Dolby, Thomson, Sisvel, H.264, MPEG4 and any other natural or legal person. All concerning royalties of patents and trade marks will be paid or negotiated with the above mentioned owner by you. In case of any patent or trademark infringement you are responsible for all necessary processes and costs. You accept and acknowledge that all prices of Models offered by supplier are exclusive of any royalties, charges or license fees for any patents in any countries or areas.